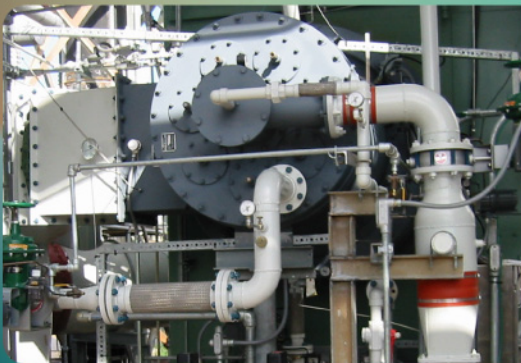


# Ultra Low NOx Combustion Systems

## North American's **Magna-Flame® LE and LEx**

- *Ultra low emissions levels maintained through 6.5:1 turndown*
- *20:1 system turndown capability*
- *Quiet, smooth operation*
- *Lower FGR requirements compared with other technologies*
- *PLC-based control for easy system startup, low maintenance, and long term repeatable performance*



### at a Chemical Plant

60,000 lb/hr, 200 psig Nebraska package boiler  
72 mm Btu/hr LE at 15% excess air  
NOx less than 0.01 lb/mm Btu, 8.1 ppm  
CO less than 0.015 lb/mm Btu, 20 ppm  
15-24% FGR



### at a Wall Board Plant

Gypsum board dryer recirculating air heater @ 800° F  
80 mm Btu/hr LEx at 60% excess air  
NOx less than 0.008 lb/mm Btu, 6.8 ppm  
CO less than 0.034 lb/mm Btu, 45 ppm  
No FGR

Above emissions concentrations corrected to 3% O<sub>2</sub> and are the results from third party testing.

281.693.0074  
combustion@namfg.com  
www.namfg.com



**North American**  
Manufacturing Company, Ltd.